



Drylac®  
Powder Coatings

# Stellix

2nd generation bonded metallic surface finishing | Volume 3



# Metallic surface finishes for exterior and interior applications

This color chart combines popular exterior and interior **Stellix** 2nd generation bonded metallic powder coatings, designed with the designer, the coater and the OEM in mind.

**Stellix; TIGER Drylac®** 2nd generation bonded metallic surface finishes are entirely manufactured in-house using an advanced proprietary technology 2nd generation bonding process that imparts advanced quality and a high degree of color consistency during the application process.

**Stellix** 2nd generation bonded metallic surface finishes offer unique benefits including batch-to-batch consistency, recyclability, uniform and flawless finish, higher first pass transfer efficiency and lower gun settings leading to less equipment wear. With **Stellix** there is no need for special equipment during application, no dry spray, clouding, stripping or picture framing and most importantly, particles do not segregate during transportation and storage.

For a proper application of **Stellix** 2nd generation bonded metallic surface finishes, it is recommended to carefully read the “Guidelines for application of metallic powder coatings” and adhere to its contents. This document is downloadable from TIGER’s website.

Surface finishes designed for **exterior applications** are also suitable for interior applications. Surface finishes designed for **interior applications (Series 09, Series 69)** do not offer adequate UV resistance and, therefore, are not suitable for exterior applications. Applying a clear top coat over a surface for interior application will not increase its UV resistance.

## Antique/vein

Polyester/epoxy and polyester-based textured metallic surface finishes (also known as antique or vein) in **TIGER Drylac® Series 09** and **Series 49** are a simple solution to hide uneven surfaces. They are easy to maintain and add visual dimensional layers to objects that otherwise show no character. While antique/vein surface finishes in **Series 09** require a clear top coat to increase durability and chemical resistance, in **Series 49** they do not require a clear top coat for neither exterior nor interior applications.

## Glitter

Polyester-based surface finishes containing sparkling metallic flakes suspended in a clear coat. They can be applied over any base coat color, and provide a high range of effects by just changing the base coat color. They are available in Gold (not displayed in this chart) and Silver. The **Twilight** version, **TIGER Drylac® 49/00390** provides multiple-color sparkles to add delight and cheerfulness to any color.

## Iron glimmer

Polyester-based smooth and fine textured surface finishes provide a metallic look while containing little or no metallic pigments. They are ideal for one-coat finishing solutions.

## Brilliant reflective

Brilliant reflective surface finishes such as **Mirror Silver, TIGER Drylac® 49/91260, Chrome OGF, TIGER Drylac® 49/91312** and **Kromezone, TIGER Drylac® 49/95001** are high performance surface finishes. The extreme brilliance of this type of surface finishes relies on the high flow and good smoothness of the base powder coating and the perfect alignment of the metallic particles at the surface. Cleanliness of the substrate before application is very critical. Any substrate surface imperfections as well as impurities and metal shaving will be very visible. Substrate surface impurities will appear as noticeable protrusions. These surface finishes require a clear top coat in order to protect the thin layer of aluminum flakes.

## Pearlescent

Polyester-based surface finishes containing mica pigments offer reflective metallic values reminiscent of natural pearls. They provide luster and shine.

# steliX

2nd generation bonded metallics



brilliant reflective | 49/91312  
Chrome OGF \* | \*\*\*



brilliant reflective | 49/91260  
Mirror Silver \*



brilliant reflective | 49/95001  
Kromezone \*



glitter | 49/00320  
Silver (top coat) \*\*  
(Black 49/82830 base coat)



glitter | 49/00390  
Twilight (top coat) \*\*  
(Black 49/82830 base coat)



glitter | 49/90009  
Black Stardust \*\*



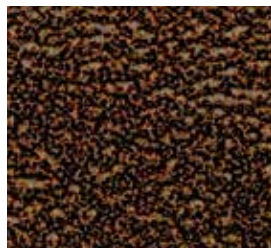
antique/vein | 49/10363  
White



antique/vein | 09/90160  
White Hybrid \*  
Interior only



antique/vein | 09/90170  
Grey Hybrid \*  
Interior only



antique/vein | 09/90180  
Copper Hybrid \*  
Interior only



antique/vein | 09/90190  
Silver Hybrid \*  
Interior only



antique/vein | 49/93240  
Silver



antique/vein | 49/90620  
Copper



antique/vein | 09/68631  
Silver Gold \*  
Interior only



antique/vein | 09/90200  
Gold Hybrid \*  
Interior only

\* To increase durability and chemical resistance, TIGER Drylac® recommends the application of a clear top coat for interior and exterior applications.



glimmer smooth | 49/70190  
P 2 Glimmer



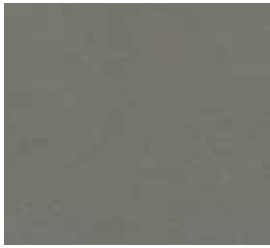
glimmer smooth | 49/70200  
P 3 Glimmer



glimmer smooth | 49/70220  
P 4 Glimmer



glimmer smooth | 49/80180  
P 5 Glimmer



glimmer smooth | 49/70210  
P 6 Glimmer



glimmer smooth | 49/80190  
P 7 Glimmer



glimmer smooth | 49/70230  
P 14 Glimmer



glimmer smooth | 49/77790  
DB 702 Glimmer



glimmer smooth | 49/84340  
DB 703 Glimmer



glimmer fine texture | 49/70785  
US 1 Fine Texture Glimmer



glimmer fine texture | 49/70787  
US 2 Fine Texture Glimmer



glimmer fine texture | 49/70789  
DB 702 Fine Texture Glimmer



fine texture | 59/91611  
Oil Rubbed Bronze Fine Texture



fine texture | 38/68192  
Gold Brown



fine texture | 49/79680  
Anthracite Metallic



fine texture | 09/90530  
Silver Fine Texture  
*Interior only*



antique/vein | 49/91190  
Gold



fine texture | 09/68560  
Rustico  
*Interior only*



fine texture | 38/68130  
Greco



fine texture | 09/68420  
Copper Blast \*\*\*  
*Interior only*

\*\*\* To enhance the depth of the finish, TIGER Drylac® suggests the application of a clear top coat.

Recommended clear top coats | For interior: Clear Flat Matte epoxy 69/00300 | For exterior and interior: Clear Matte acrylic hybrid 16/00030 | Clear Satin polyester TGIC 49/00280 | Clear Glossy polyester 49/00030



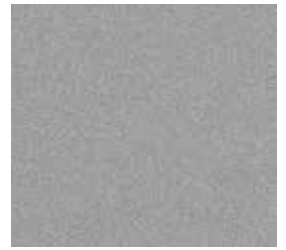
glossy | 38/91020  
Anodized Silver



glossy | 49/90380  
Standard Silver \* | \*\*\*



glossy | 49/90450  
Sparkle Silver \*\* | \*\*\*



glossy | 38/90080  
Brilliant Sparkle Silver \*\* | \*\*\*



glossy | 39/90000  
Silver



glossy | 49/92790  
No-Smudge Silver



glossy | 38/90010  
Marine Silver One Coat



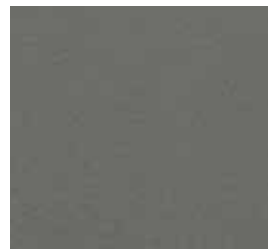
glossy | 59/93370  
APRX to RAL 9006 Gloss One Coat



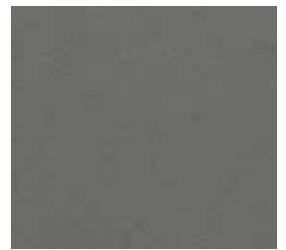
glossy | 49/91558  
Twinkle



glossy | 49/92890  
APRX to RAL 9006 Gloss One Coat



glossy | 09/90460  
APRX to RAL 9007 Gloss Silver  
*Interior only*



glossy | 49/92880  
APRX to RAL 9007 Silver Gloss



glossy | 49/93061 **NEW**  
Stardust



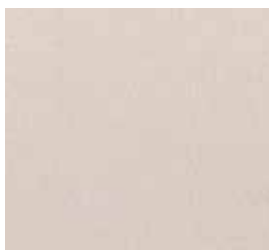
glossy | 49/99999  
Bengal Silver \*\*\*



glossy | 49/92900  
Silver Gloss One Coat



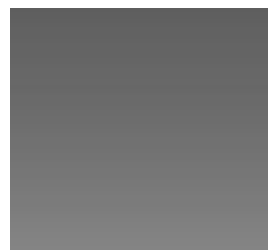
glossy | 59/95726  
Gun Metal



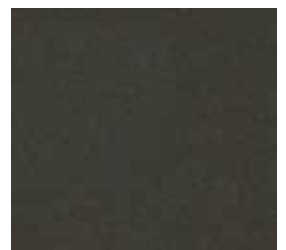
glossy | 38/15020  
Champagne 303



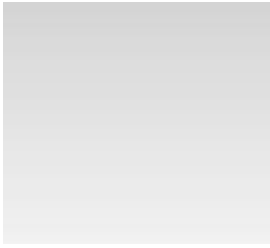
glossy | 09/96114 **NEW**  
Satin Nickel \*  
*Interior only*



glossy | 09/80340  
Grey Metallic \*  
*Interior only*



glossy | 09/80170  
Anthracite Metallic  
*Interior only*



matte | 69/91390  
Epoxy Silver Matte \*  
*Interior only*



matte | 49/90500  
Silver Matte



matte | 39/60020  
Bronze Matte



matte | 49/92380  
Silver Matte One Coat



matte | 49/92910  
APRX to RAL 9006 Matte One Coat



matte | 09/60600  
Bronze Metallic  
*Interior only*



pearlescent | 49/18140  
Pearlescent White \*\*\*



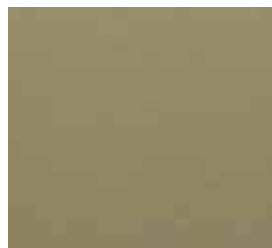
matte | 49/66230  
Brown C33 One Coat



matte | 49/66220  
Bronze C34 One Coat



glossy | 09/60610  
Beige Metallic  
*Interior only*



matte | 49/15240  
Beige C32 One Coat



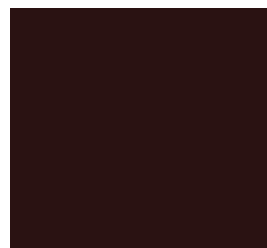
matte | 49/61120  
Low Lights Bronze



glossy | 49/90137  
Sahara Gold \*



matte | 49/92780  
Copper Metallic \*



matte | 09/68635  
High Lights Bronze  
*Interior only*



## Outgassing forgiving (OGF) properties

OGF powder coatings are developed for casting, hot galvanized and forged steel, aluminum flame-sprayed and other porous and outgassing prone substrates such as fired clay and ceramics. It is possible to customize any **Stellix** 2nd generation metallic surface finish in an OGF formulation. Alternatively, OGF additives can be added to any **TIGER Drylac**<sup>®</sup> powder coating. However, for large volumes, it is recommended to produce the powder coating in an OGF formulation on a custom-basis.

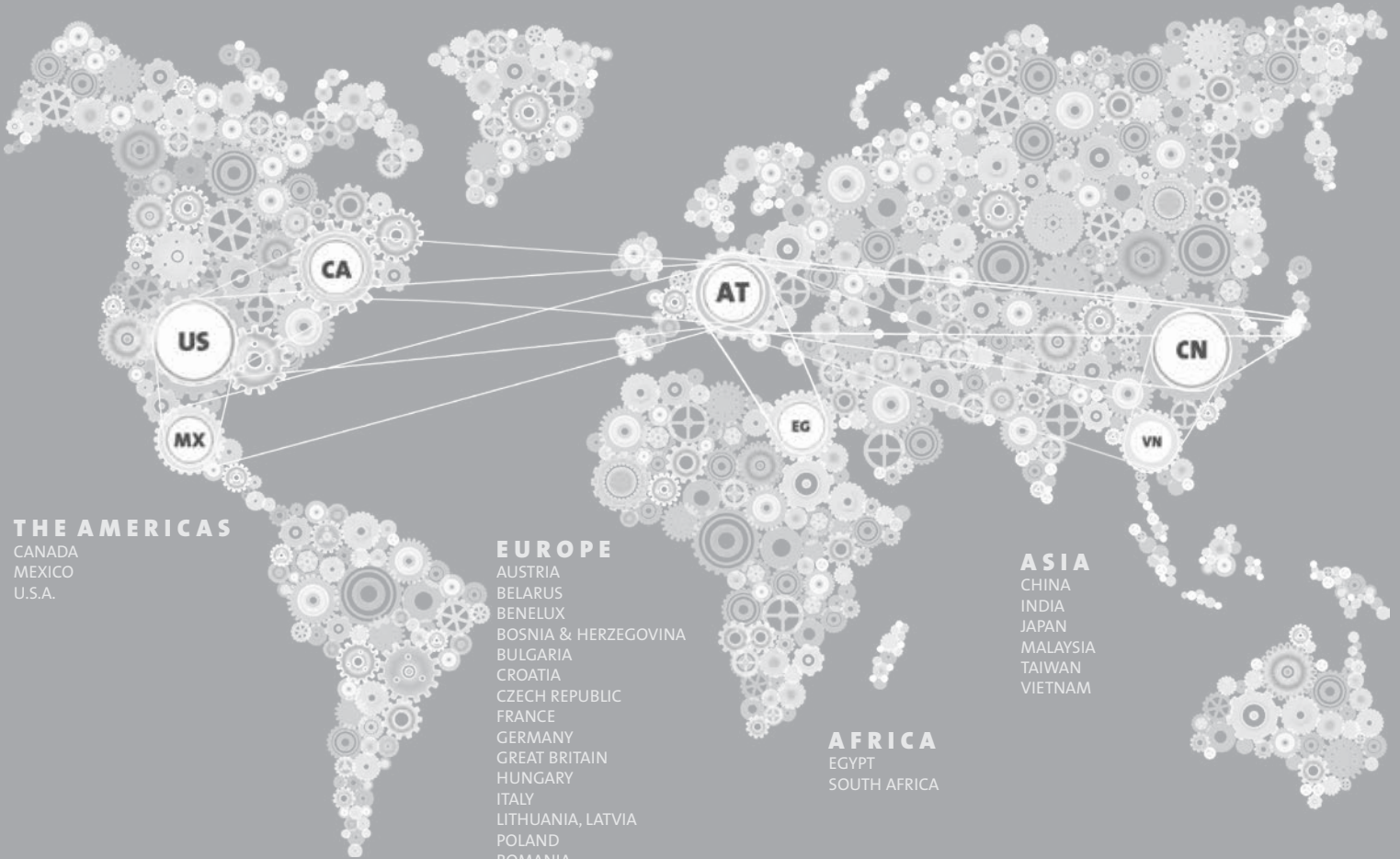
**Stellix** 2nd generation bonded metallic surface finishes exhibited in this color chart include:

Interior applications	Epoxy/polyester (hybrid)	Series 09
	Epoxy	Series 69
Interior and exterior (non-architectural) applications	Polyester TGIC	Series 39
		Series 49
	Polyester TGIC-free	Series 59
	Polyester TGIC super durable	Series 38

## Disclaimer

Color swatches featured in this color chart have been matched to color standards at a **60-degree visual angle under a D65 Daylight** primary source. RAL numbers are matched as approximate as possible to the RAL Standards. Gloss level on metallic, fine and rough textured swatches cannot be accurately measured. The swatches are to be considered as an indication only. In practice, discrepancy between the color swatch and the actual powder coating may arise. This is due to paper and ink limitations, the influence of light and heat during the color chart production, as well as gloss level, substrate, surface variations, binder systems and pigments, coating thickness and cure oven conditions used during application. For an accurate color and finish assessment, it is recommended to obtain a powder coated sample panel from **TIGER Drylac**<sup>®</sup>.

# TIGER WORLDWIDE NETWORK



## THE AMERICAS

CANADA  
MEXICO  
U.S.A.

## EUROPE

AUSTRIA  
BELARUS  
BENELUX  
BOSNIA & HERZEGOVINA  
BULGARIA  
CROATIA  
CZECH REPUBLIC  
FRANCE  
GERMANY  
GREAT BRITAIN  
HUNGARY  
ITALY  
LITHUANIA, LATVIA  
POLAND  
ROMANIA  
SERBIA & MONTENEGRO  
SLOVAKIA  
SLOVENIA  
SPAIN  
SWEDEN  
SWITZERLAND  
TURKEY  
UKRAINE

## AFRICA

EGYPT  
SOUTH AFRICA

## ASIA

CHINA  
INDIA  
JAPAN  
MALAYSIA  
TAIWAN  
VIETNAM

contact details available on  
[tiger-coatings.com](http://tiger-coatings.com)



Member of

Powder  
Coating  
Institute